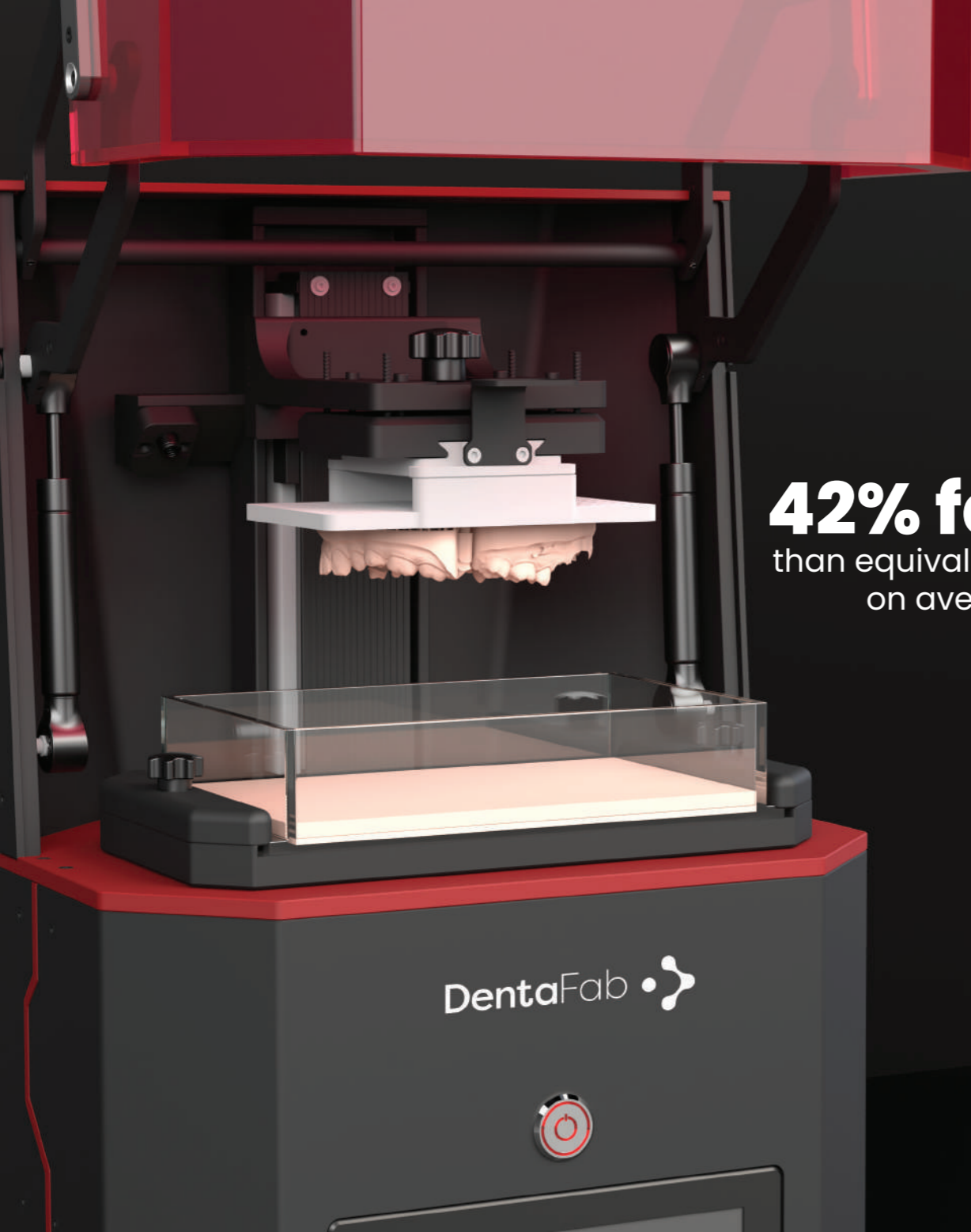




**DentaFab** • 

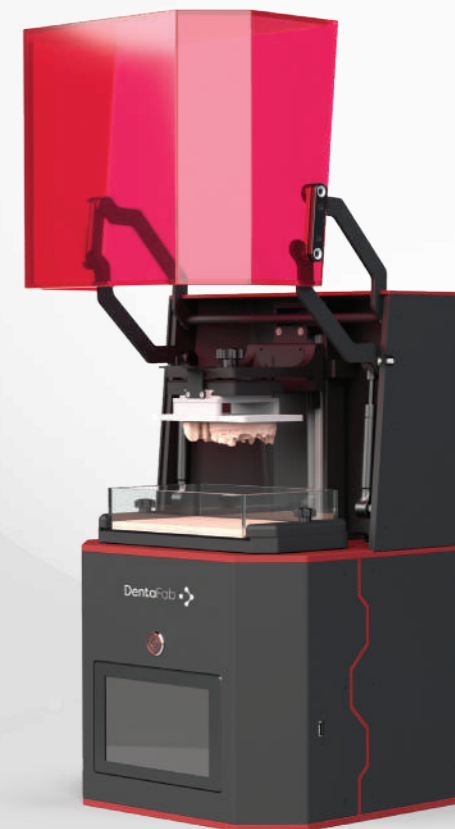
3D Printers & Materials  
for Digital Dentistry



**42% faster**  
than equivalent printers  
on average!

# Sega Dental 3D Printer

All your dental production at an  
outstanding Speed and Quality!

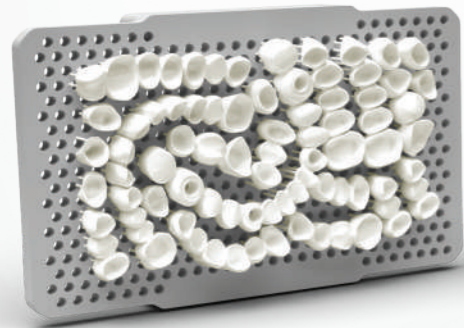


## Technical Specification

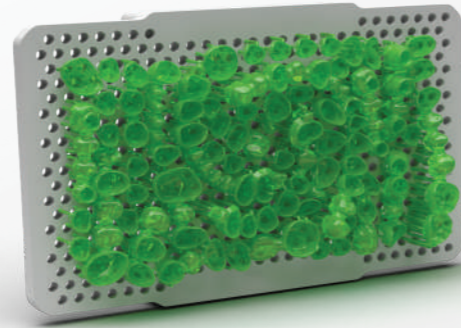
Printing Technology	Fast DLP
Build Volume	120 x 67.5 x 114 mm
Pixels size	50 -100 µm
Led Wavelength	405nm Uv industrial grade LED
Typical Build Time	30 Minute
Data Handling	STL and SLC
Interface Software	DentaSoft
Power Requirements	110-250V AC; 50/60Hz. Max 400W
Printer Control	Touch Display
Connecvity	USB, WIFI
Machine Size	52 x 32 x 32 cm - 20.5 x 12.4 x 12.4 in
Machine Weight	22 kg - 48 lbs
Warranty	24-month manufacturer's warranty
Technical Support	Lifetime technical support
Material	Powerresins and other contracted resins

# Speed and Accuracy in Dentistry Practices!

DentaFab Sega 3D Printer combined with Powerresins broad portfolio of dental materials allow you to produce precise, fast and continuous solutions in many dental indications.



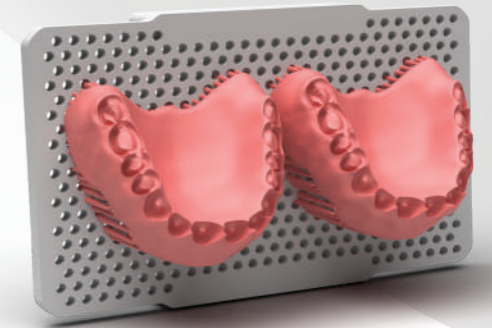
Temp Teeth  
**12 min**



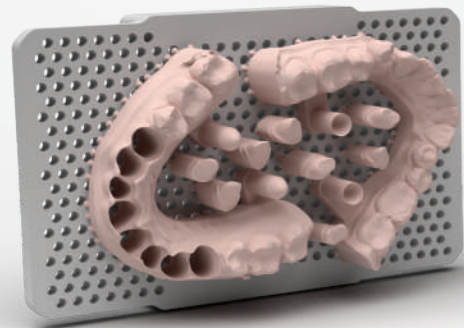
Crown  
**14 min**



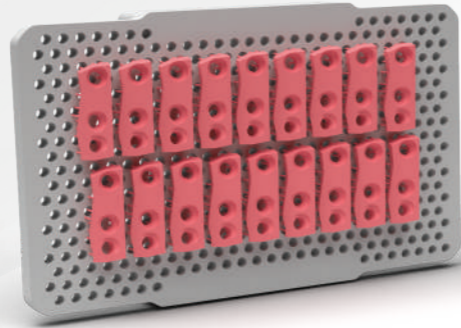
Surgical Guide  
**28min**



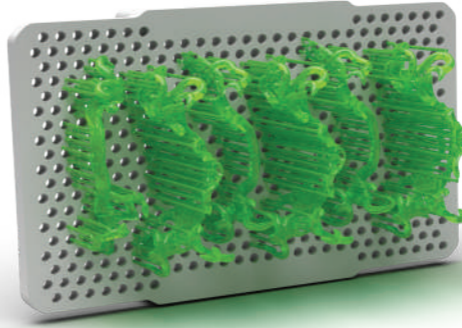
Denture  
**44 min**



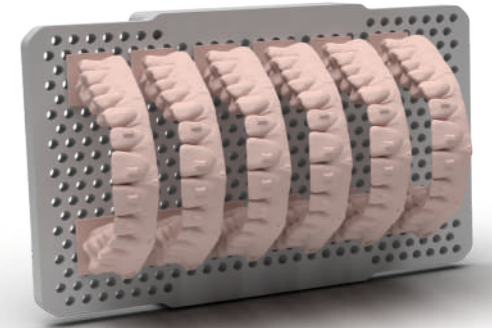
Model  
**32 min**



Gingiva  
**13 min**



Parsial  
**35 min**



Orthomodel  
**46 min**



# Seamless and Fast Workflow

New technological developments, especially artificial intelligence, are changing all workflows. Adapting to technology has become inevitable. Digital dentistry applications work faster and more smoothly than traditional methods. As DentaFab, we offer you technological tools that you can use to speed up your work.

## Fast Temp Crown Workflow



ALL WORKFLOW  
**30**  
MINUTES

# Pro Dental Materials

CE certified biocompatible materials developed to get the highest performance in the dental industry.

POWER RESINS



PREMIUM MMA  
FREE FORMULA



## MODEL RESIN

It was specifically developed in order to have high dimensional stability and a special texture for dental models processing.



## TEMP RESIN

Temp resin is a biocompatible resin for patient's in-mouth use as temporary teeth.



## SURGICAL GUIDE RESIN

SG is a biocompatible CE Class 1 resin, developed for the 3d printing of Surgical Guides for implant surgery use



## GINGIVA RESIN

PowerResins Gingiva resin is a flexible resin to print soft gingival masks for the model prints



## BURN RESIN

PowerResins Burn is a special 100% ash-free castable resin that is formulated for perfect quality in dental Cr-Co metal casting and e-max press.



## DENTURE RESIN

Powerresins Denture is a biocompatible resin (Class IIa), developed for the 3d printing and manufacturing of long term removal dental dentures



## Lifetime Support

We stand by all our customers with unlimited lifetime technical support. We are always with you with our call center and global offices.



## Global FootPrint

In a short time frame of only 10 years; Our company has offices in **7 locations** including Miami, Amsterdam and Dubai. With the help of our local partners, our 3D Printers and materials are used in more than **60 countries** by thousands of jewelry and dental professionals around the world.



3D Printers & Materials  
for Digital Dentistry

### **Global Offices**

Amsterdam - Miami - Dubai

### **Local Offices**

İstanbul - Adana - Antalya



[dentafab.com](http://dentafab.com)